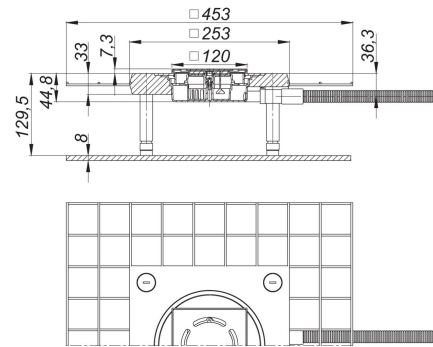
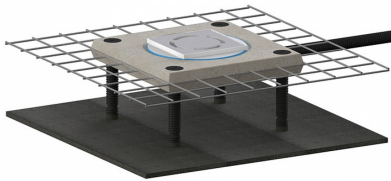


21. November 2019

**DALLMER**

## pumped floor drain CeraDrain Active K 12, d: 20 mm, 120 x 120 mm

Product No. **527103**  
 EAN: 4001636527103  
 Discontinued



### Sensor unit in a ABS housing

#### Specification sensor unit:

- remote integrated visual function display
- 5.5 m long cable for connection to CeraLine Aktiv installation box
- 20 mm solvent weld socket
- 5 m flexible corrugated tube with integrated cable pulling device

#### Specification drain body:

- polymer concrete collar with steel mesh reinforcement
- glassfibre mat reinforcement
- sound absorbing and height adjustable levelling legs
- temporary blanking plate
- height and laterally adjustable grating

#### material:

frame ABS, 120 x 120 mm  
 grate 304 stainless steel, load class K 3 (300 kg)

CeraDrain Aktive pumped shower drainage system is ordered as two separate components - floor drain 527103 and installation box. 525819

Product No.	Description	Dimensions
502377	grate Primus 115, 115 x 115 mm	115 x 115 mm

21. November 2019

**DALLMER**

---

Product No.	Description	Dimensions
525819	installation box Active	